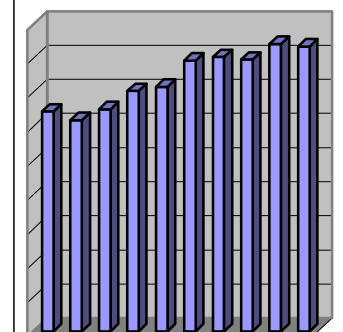
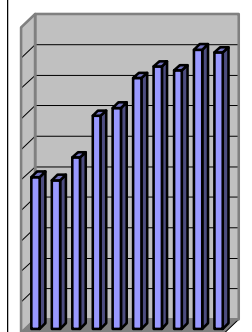
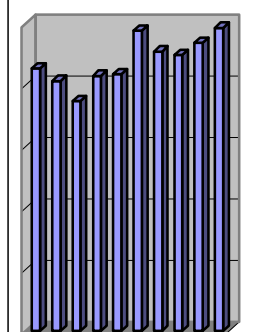
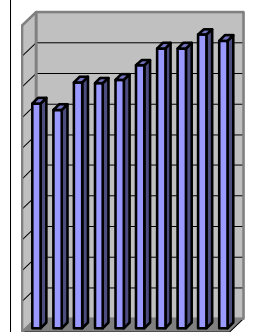
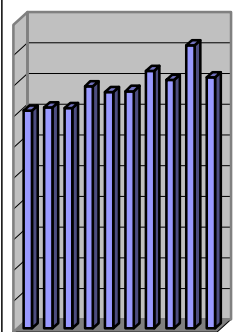


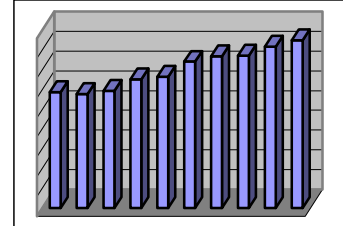
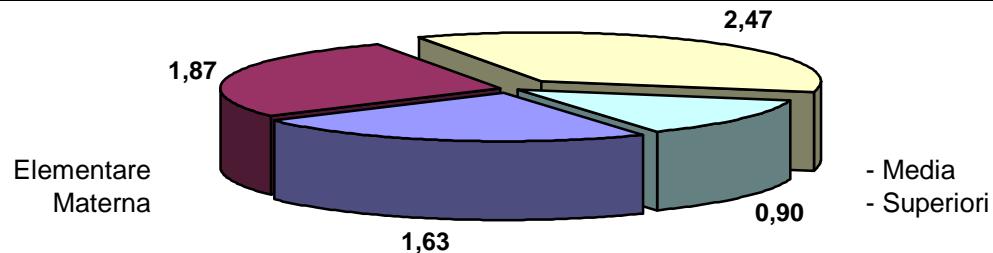
Alunni in situazione di Handicap in rapporto alla popolazione scolastica
- Provincia di Padova -

anno scolastico	ordine di scuola									totale complessivo					
	infanzia			primaria			media			superiore			alunni	alunni H.	%
	alunni	al. H.	%	alunni	al. H.	%	alunni	al. H.	%	alunni	al. H.	%			
1997/98	4.237	60	1,42	33.445	490	1,47	21.959	469	2,14	31.600	157	0,50	91.241	1.176	1,29
1998/99	4.385	63	1,44	34.270	488	1,42	21.972	447	2,03	32.891	160	0,49	93.518	1.158	1,24
99/2000	4.395	63	1,43	34.413	552	1,60	21.392	400	1,87	31.349	176	0,56	91.549	1.191	1,30
2000/01	4.954	78	1,57	34.807	556	1,60	21.874	454	2,08	30.969	216	0,70	92.604	1.304	1,41
2001/02	5.010	77	1,54	35.009	567	1,62	22.313	466	2,09	30.697	222	0,72	93.029	1.332	1,43
2002/03	5.055	78	1,54	35.221	604	1,71	22.506	550	2,44	30.818	253	0,82	93.600	1.485	1,59
2003/04	5.310	89	1,68	35.928	656	1,83	23.000	523	2,27	31.438	270	0,86	95.676	1.538	1,61
2004/05	5.319	86	1,62	36.728	670	1,82	23.297	523	2,24	31.939	270	0,85	97.283	1.549	1,59
2005/06	5.319	98	1,84	36.728	703	1,91	23.297	546	2,34	31.939	292	0,91	97.283	1.639	1,68
2006/07	5.331	87	1,63	38.726	726	1,87	23.445	578	2,47	34.394	311	0,90	101.896	1.702	1,67

Andamento percentuale degli alunni H. rispetto al totale degli alunni della scuola, per gli anni scolastici indicati.



Ultimo anno incidenza percentuale degli alunni H. nei vari ordini di scuola.



incremento assoluto totale